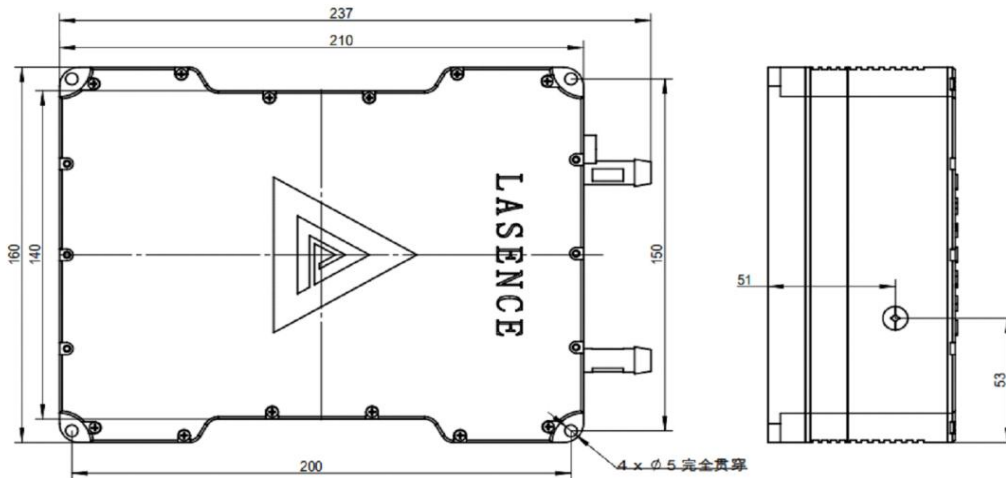


**G510D5000-237x160x71-30**

### Applications

- . Laser Medical Treatment
- . Scientific Experiment
- . Optical Instrument
- . Laser Display

### Dimensions (Unit: mm)



### Specifications

<b>Model Number</b>		<b>G510D5000-237x160x71-30</b>		
<b>Mechanical Specifications</b>		<b>Min</b>	<b>Typ</b>	<b>Max</b>
Laser Head	Width x Height (mm)	-	160x71	-
	Length (mm)	-	237	-
	Weight (g)	-	-	2000
Housing Material		Aluminum passivation		
<b>Optical Specifications</b>		<b>Min</b>	<b>Typ</b>	<b>Max</b>
Wavelength (nm)		505	510	513
Output Power (mW)		5000	-	-
Power Stability at const. Temperature <sup>(1)</sup>		-	+/- 1%	+/- 3%
Output Power Mode		CW		
Laser Class		3B		

<sup>(1)</sup> after max. 3 minutes

<b>Beam Specifications</b>	<b>Min</b>	<b>Typ</b>	<b>Max</b>
Beam Divergence (mrad) <sup>(1)</sup>	-	30	40
Beam Waist (μm)	-	250	-
Beam Diameter at Output Window (mm)	-	1	
Beam Mode Longitude	Multi		
Beam Mode Transverse	TEM <sub>n0</sub>		
Polarization Ratio (Linear)	100:1	-	-
Residual IR	-	-	3%
<b>Electrical Specifications</b>	<b>Min</b>	<b>Typ</b>	<b>Max</b>
Power Type	ACC		
LD Voltage (DC, V)	14	14.5	15
LD Operating Current (A)	-	8	10
Power Consumption (W)	-	116	150
Housing Isolation	No		
ESD protection	No		
<b>Reliability</b>	<b>Min</b>	<b>Typ</b>	<b>Max</b>
Water Conditions-Temperature Range (°C) <sup>(2)</sup>	15	-	25
Water Conditions-Pressure (bar)	1	-	3
Rise Time (mins)	-	3	5
Storage Temperature (°C)	0	-	40
Environmental Humidity (RH, %)	5	-	85
Lifetime (hours) (MTTF at 25°C)	5,000	-	-
RoHS Compliance Declaration	Yes		

<sup>(1)</sup> Full Angle (1/e<sup>2</sup>)

<sup>(2)</sup> One point temperature between 15 to 25°C

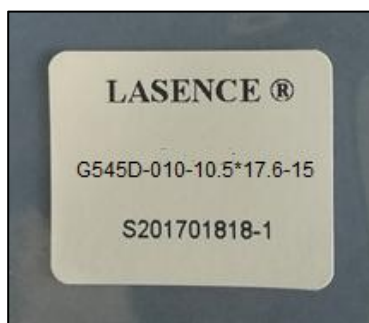
## Remarks

- Product ID for placing orders: G510D5000-237x160x71-30
- Datasheet Version: 1
- No Photodiode
- Customer is responsible for suitable water-cooled machine
- Label on plastic bag (see picture of another product's label in picture 2):
  - LASENCE®
  - G510D5000-237x160x71-30
  - Lasence Order Number - Module Number
- Anti-static protector for transportation (see picture 4)
- Example of beam spot (see picture 5)
- Laser Beam Warning Label on module housing (see picture 1)
- Laser Wavelength (see picture 3):
  - Lasence Material Code
  - Lasence Order Number - Module Number

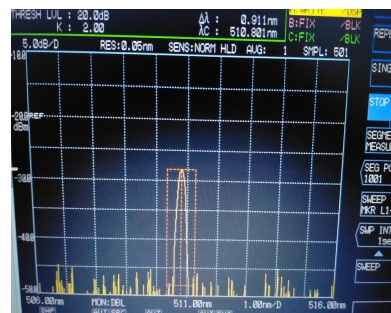
**Picture 1**



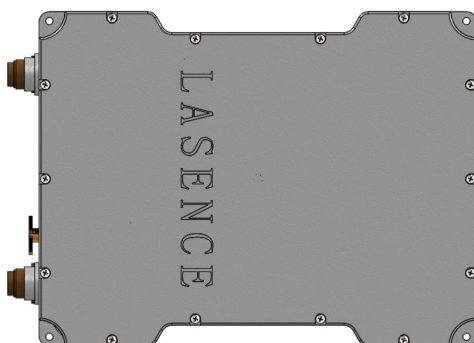
**Picture 2**



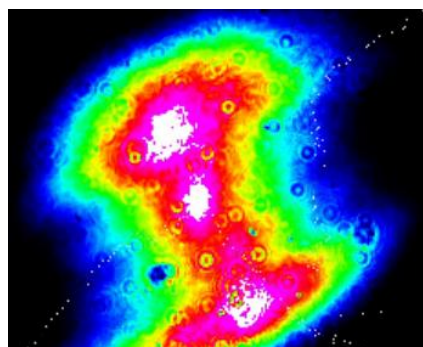
**Picture 3**



**Picture 4**



**Picture 5**



## Typical Output Performance (examples)

### 1.) Power vs. Time

